



# SonixOP/SP/MDP

Powerful and Versatile Ultrasound Systems



New 2010 Version

# Third Generation OpenSONIX™ Platform for Premium Imaging Performance

Our latest generation beamformer provides outstanding performance.



## Cardiac

2D imaging, M-Mode, PW and CW Doppler, Color Doppler, ECG trigger, comprehensive cardiac calculations and report package.



## Musculoskeletal

2D and Color imaging, linear transducers including 38mm and hockey stick, extended field of view and Panoramic imaging.



## OB/GYN

Transabdominal OB imaging, endocavity imaging, comprehensive OB calculation package, user-defined presets, Color, Power Doppler, PW Doppler, and Simultaneous 2D/Color.



## Vascular

Multiple linear transducer for all vascular exams. Color and PW Doppler, Triplex, beam steering, Angle Correct, Simultaneous 2D/Color, Dual or Quad formats, Pictograms and report package.



## Breast Ultrasound

Superb breast image quality. Linear transducers including 38 mm or 60mm, biopsy guide, Color Doppler, user-selectable Pictograms and Annotations.



## General Imaging

Abdominal imaging, Small Parts, and MSK with user-defined Presets, Panoramic imaging, Spatial Compound imaging, Speckle Reduction, Pulse Inversion Harmonics and Extended Pulse Imaging (EPI).

# Ultrasound Systems That Meet Your Needs

## SonixOP

### General Purpose Ultrasound

With basic ultrasound functionality and general imaging, the SonixOP configuration provides premium imaging with room to grow.

## SonixSP

### Premium 3D/4D Performance

The SonixSP supports industry leading technology and innovation and provides premium 3D/4D imaging capability.

## SonixMDP

### High-end, Full-featured System

The SonixMDP offers support for multiple applications and includes a complete set of advanced Modes and technologies developed on the OpenSONIX platform.



# Meticulous Attention to Detail



180° display rotation

Console swivel and tilt controls

Height control pedal



## USB Data Ports

Easily accessible USB Data Ports to transfer your imaging data and to upgrade your system with the latest software.



## Peripheral Tray

Conveniently houses printer, optical drive, and stores extra supplies. (Optional)



## Folding LCD Screen

Compact design to make it easy to move and store the system.



## Battery Powered (UPS)

Up to 1.5 hour uninterruptible power for mobility in your clinical settings. (Optional, not available on the SonixOP)



## User Accessible Filter

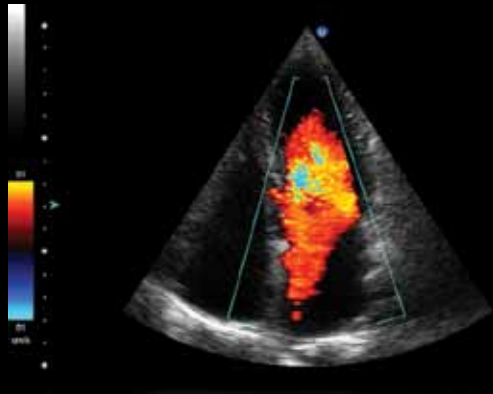
Easy access to filter for simple cleaning and maintenance.



## Connectivity Options

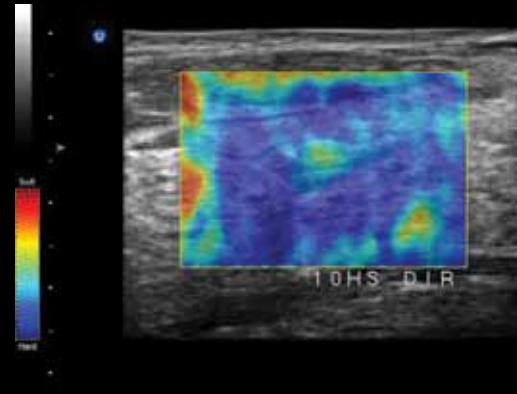
Multiple Data Ports: USB, Ethernet, Footswitch, and DVI Video Connections.

# Premium Image Quality for a Wide Variety of Exam Types



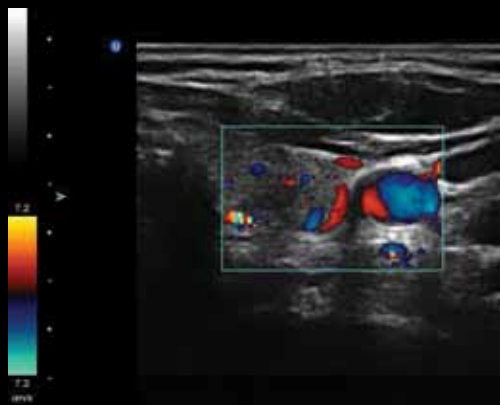
## Cardiac and CW

The Sonix Series supports phased array transducers for adult and pediatric cardiac imaging applications. A separate, continuous wave beamformer allows for improved spectrum signal-to-noise ratio.



## Advanced Modes

Because of its highly programmable beamformer and ability to add new software plug-in applications, the Sonix Series supports advanced imaging modes such as Elastography and Panoramic Imaging.



## Premium 2D & Color

In addition to outstanding raw image quality, the Sonix Series supports Pulse Inversion Harmonics, Spatial Compounding and advanced adaptive Speckle Reduction.



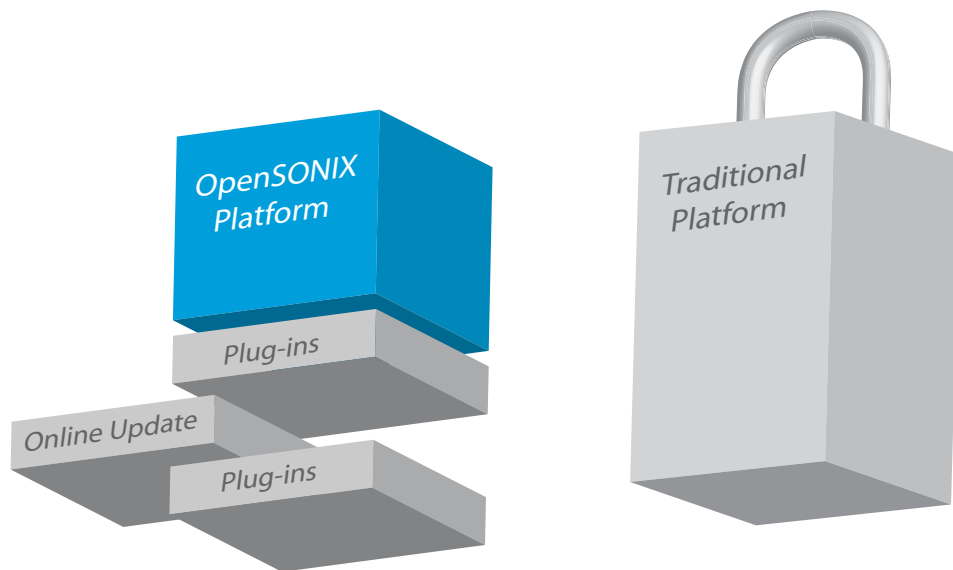
## 4D Imaging

The Sonix Series supports high performance, lightweight transducers for OB/GYN applications. The 4D abdominal transducer provides fast volume acquisitions. The 4D endocavity transducer supports high resolution 1-sweep acquisitions that can be saved and reviewed on a separate computer.

# Always Up-to-date, Always Connected - Unlimited Potential.

## OpenSONIX Platform

OpenSONIX is a powerful software-based platform that runs the standard Ultrasonix programs as well as various software plug-ins. These plug-ins add advanced capabilities including new imaging technologies such as Elastography, connectivity to various electronic medical record (EMR) systems and customized user configurations. The Ultrasonix platform can be reprogrammed with new software applications and optional plug-ins to keep the system current with technological advancements, thereby protecting your investment. Traditional systems have fixed functionality, limiting their ability to add new ultrasound technologies.



Extensive online capabilities allow for easy software updates, remote diagnostics and support. In addition, the technology provides for the ability to connect with online databases for streamlined data management. The OpenSONIX platform provides technological innovation to meet the needs of your clinical environment today and into the future.



## Ultrasonix Medical Corporation

### Head Office:

130 - 4311 Viking Way  
Richmond, BC  
Canada V6V 2K9

### European Office:

14 Manor Court Yard Hughenden Avenue  
High Wycombe, Buckinghamshire  
UK HP13 5RE

Toll Free: 1-866-437-9508  
Telephone: 1-604-279-8550  
Facsimile: 1-604-279-8559  
E-mail: [info@ultrasonix.com](mailto:info@ultrasonix.com)



For more information:

Call 1-866-437-9508 or visit [www.ultrasonix.com](http://www.ultrasonix.com)